



General

! Never connect or disconnect gauges while the power is switched on (this may damage the processor on the gauge)

i To build-up your configuration it is the best to start with only one gauge connected. Do a "search" with the software and configure the gauge. Also give the gauge a unique ID, other than 255. When done click apply and save your configuration. After this step you can apply your next gauge and repeat these steps.

! To prevent short circuits take care to keep the bottom side of the PCB free from metal or other conductive surfaces.

i Flight illusion gauges can be used with different simulator software. The gauges are compatible with Microsoft Flight Simulator (both 2004 and FSX) and with X-Plane.

Driver installation

STEP ONE 1
Download the required version for the FTD driver from www.ftdchip.com

STEP THREE 3
Connect the power supply to the central interface module

STEP TWO 2
Connect the central interface module to the computer with a USB cable

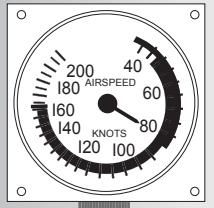
STEP FOUR 4
switch on your computer and follow the driver installation steps

! only switch on the computer when the central interface is properly connected to power and USB

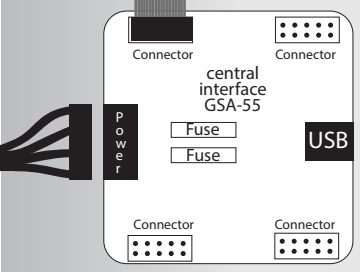
i Be sure that you know the right COM port number, because you need this information to set the correct COM port number in the G-STEP-software

When the computer is switched on, Windows will detect the new Hardware. The interface of the CIM uses a translator circuit, to map the USB interface onto a Serial Communication Port. In general PCs have one of these ports so the CIM will be installed as communication port 2 for example. But, depending on your configuration, a higher port number is possible. When driver installation is done this can be checked in the Hardware page via "My computer/System/Hardware". An additional serial port should appear there.

Hardware installation



i The four flat cable connectors on top of the PCB are for connecting the daisy chained gauges. These connectors are identical and can be used as wanted. You can connect up to 16 gauges on each connector. Hence, a maximum of 64 gauges/modules can be hooked up to 1 interface.



! Make sure you connect the interface to the computer (USB and Power Supply) when the computer is switched off.

Software installation

STEP ONE 1
Download the latest version of the G-STEP software from www.flightillusion.com

STEP TWO 2
unzip the file and run the setup.exe file

STEP THREE 3
choose the directory where you want to install the files or confirm the default location.

STEP FOUR 4
click on the icon to start the installation process

! Our software uses FSUIPC to connect and extract the flight data from Flight Simulator. You must have a copy on your computer.

i for later updates, the full installation is not necessary. In that case, just replacing the EXE file is enough.

The application program is an intermediate between the G-Step components on one side and Flight Simulator on the other side. Using FSUIPC it reads gauge values and other parameters from FS and calculates the position of needles and displays from that. After the driver installation is completed this program can be started. Any location will do as no other drivers or references are used.

