

## Flight Illusion Clock/Chronometer

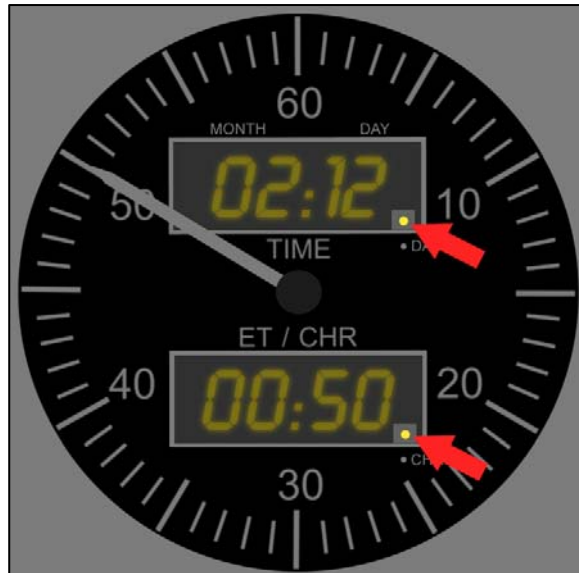
The Flight Illusion B737 Clock/Chronometer has the following functions. Note that most functions are also available as a 'stand alone' unit\*, when not connected to a PC and/or Flight Simulator.



Picture 1

- **Button 1:** Activates the Chronometer function: the needle and lower display (9) will reset to zero. In **Chronometer Mode**, a small indicator can be seen on the lower display (see picture 2)
- **Button 2:** Allows for switching between displaying **TIME** and **DATE mode** on the upper display. A small indicator can be seen on the upper display (see picture 2)
- **Button 3:** In **TIME mode**, the first 2 digits will blink and using the + or – buttons (4), the time can be manually be set. Push again for the next digits to be set. In **DATE mode** follow the same procedure to set the date manually.
- **Button 4:** + or – for manually setting time & date.
- **Button 5:** Hold button for 3 seconds to reset **ELAPSED TIME** to zero. This function will only work in the **ELAPSED TIME** mode.
- **Button 6:** Sets the lower display into **ELAPSED TIME** mode.
- **Upper Display 7:** Displays Time or Date.
- **Lower Display 9:** Displays Chronometer or Elapsed Time.

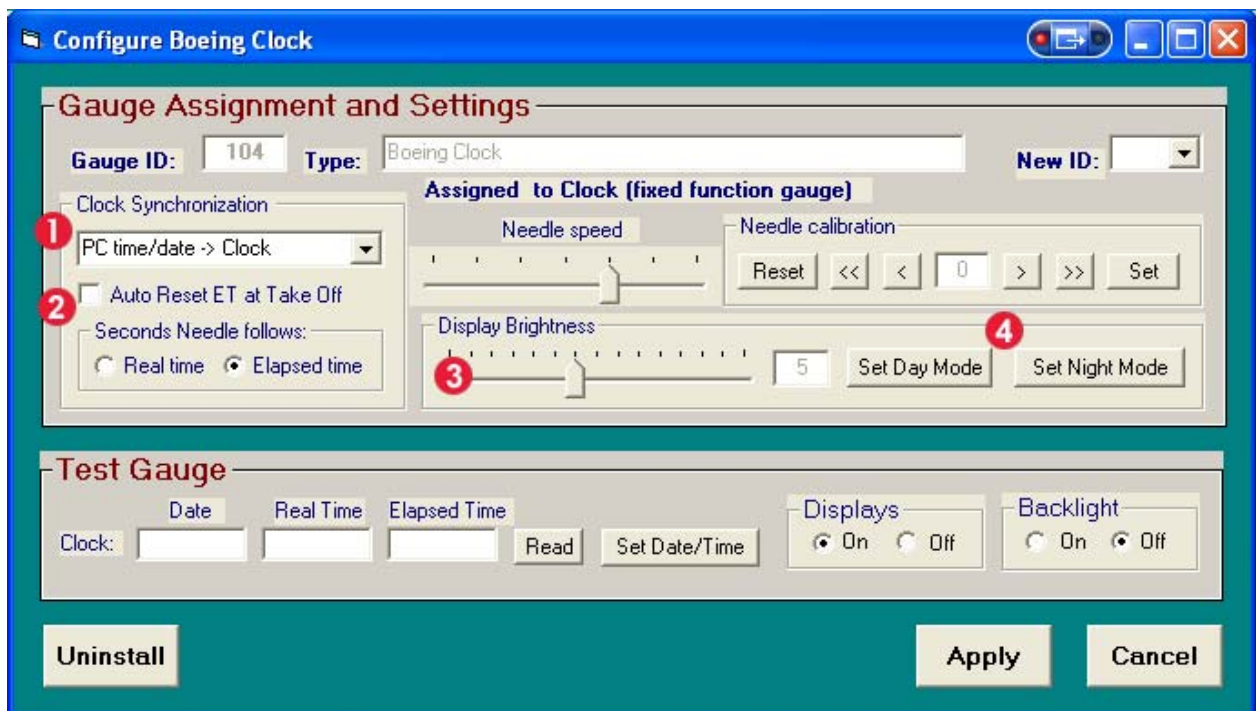
\* As a 'stand alone' unit, Time and Date information will be lost when the Chronometer has no power. Time, Date & other settings are stored in your configuration file in the Control program.



Picture 2

## Software

The Boeing Clock/Chronometer has 104 set as default gauge ID. This can be changed by clicking on 'New ID'.



Picture 3

### **1. Clock Synchronization:**

Selects how the time is synchronized: PC time/date, FS time/date or Stand alone (not Synchronized)

### **2. Auto Reset Elapsed Time:**

Elapsed time resets to zero after take off.

### **3. Display Brightness:**

Sets the display brightness

### **4. Set Day/Night Mode:**

With this option you can set the display brightness for Day Mode (Backlight Off) or Night Mode (Backlight On)

Set the display brightness with the slider (3) then click on **Set Day Mode** to store the display brightness for Day Mode (Backlight Off). Repeat for Night Mode by using the slider and click on **Set Night Mode**.

*For more info and the latest software & updates please check  
[www.flightillusion.com](http://www.flightillusion.com)*