

Technical brochure GSA-CL

NEW



Boeing
Style
Clock

Latest Boeing 737NG design with pushbuttons for ease and speed

additional connector for adding an external reset button to the glareshield

Bezel in Boeing grey to match most MIP panels

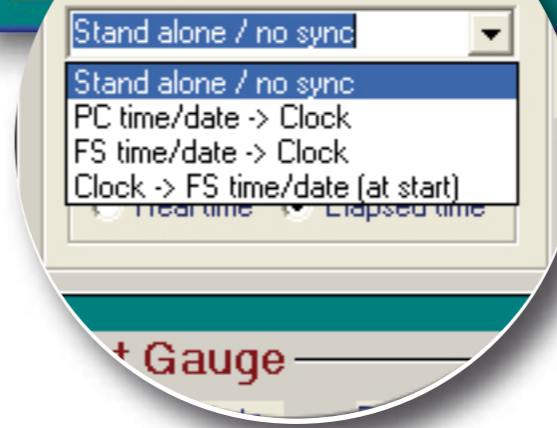
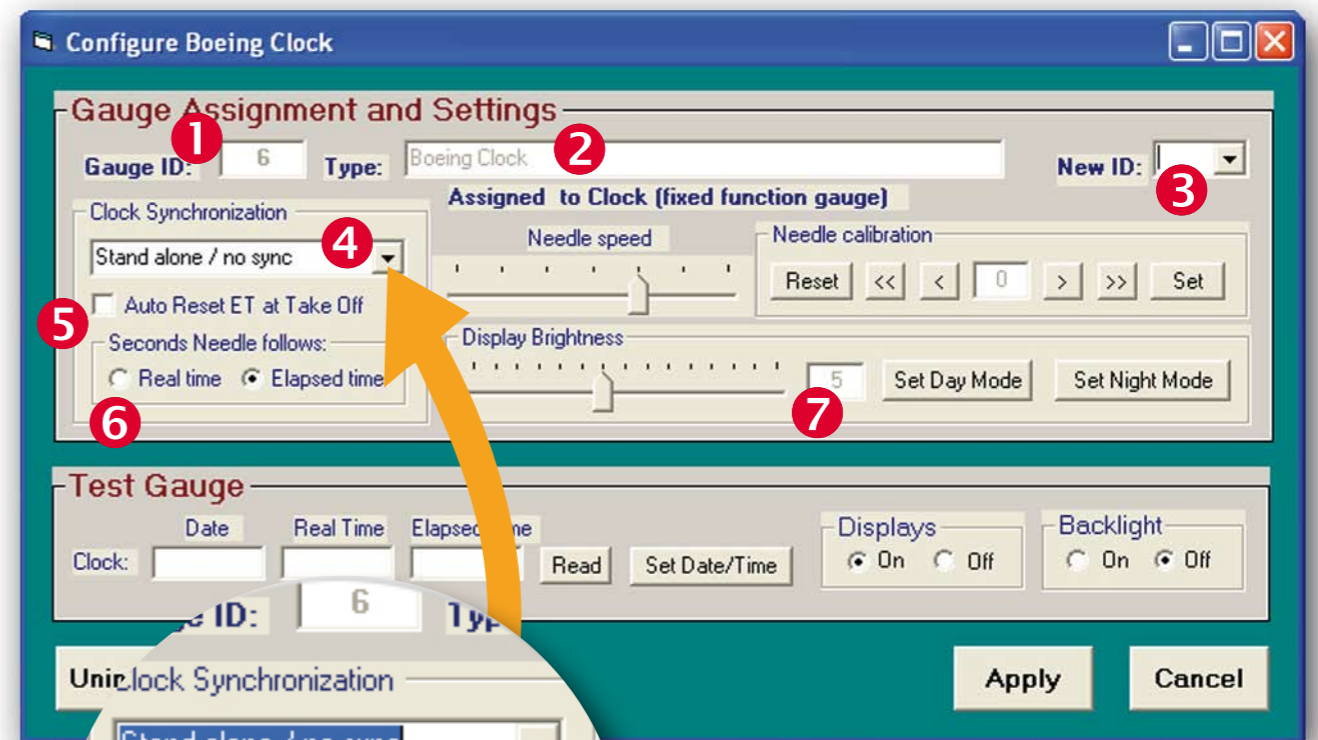
All engravings in the bezel are backlit with LED technology

Also available in Boeing Brown



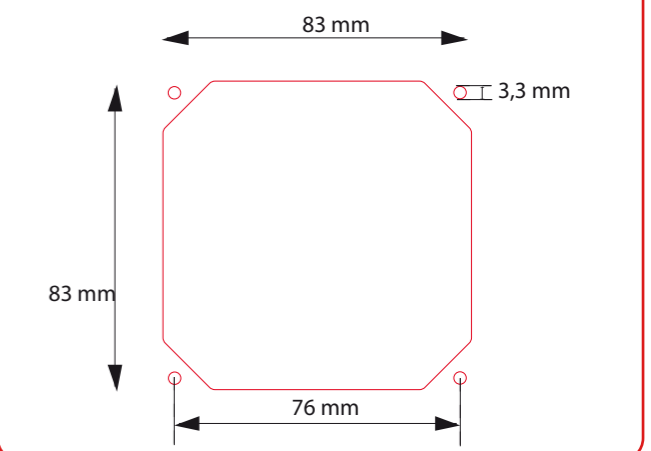
The GSA-CL is a faithful replica of the Boeing Chronometer as found in the latest 737NG cockpits. The bezel has the typical octagonal shape and comes in Boeing grey (a Boeing brown version is also available). All buttons have the same functionality as the real clock and the software allows for special functions. The inscriptions on the bezel are backlit. The clock can be used as stand alone or can be driven by the software. The user can choose to assign PC time, Flight Simulator time at startup. The clock is an essential tool for the serious hobby pilot who wants to keep track of elapsed time or to fly holding patterns as published. A connector on the circuit board allows for an extension cable to be connected to a push button in the glareshield (optional)

- 1 Chronometer: press to switch from Time to chronometer or to reset to zero:
- 2 TIME/DATE: press to switch from chrono to standard time (or PC time or FS time, as defined in the software)
- 3 SET button: press to set TIME and DATE with +/- buttons
- 4 Buttons to change TIME/DATE when SET button has been pressed
- 5 RESET button: press to bring ET to zero
- 6 ET (Elapsed Time): press to switch from chronometer to ET
- 7 Digital time and date display (HH:MM for time - DD-MM-YYYY for date)
- 8 Single needle to follow the second in ET or chronometer function.
- 9 Digital ET or chronometer display (HH:MM)



- 1 actual gauge ID
- 2 gauge type
- 3 assign a new ID if necessary
- 4 define synchronization of the clock (can be PC time or FS time)
- 5 automatic reset of elapsed time at take off.
- 6 Needle follows the second of real time or elapsed time
- 7 adjust the display brightness

Physical Characteristics	
Height	83 mm
width	83 mm
depth (incl. button)	27 mm
Power requirements	
power	5/12 volt
Connection	
type	interface



e-mail us for prices

