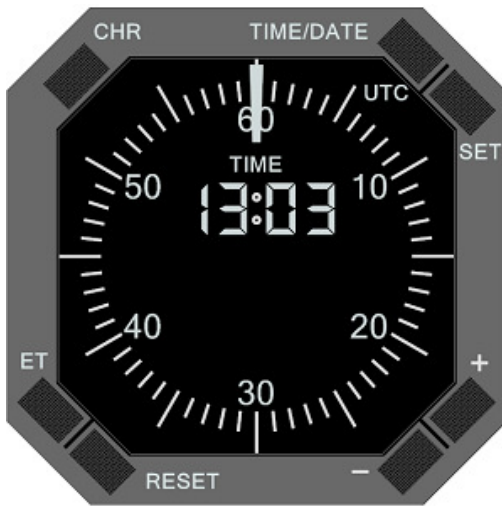


**GSA-070 & GSA-071 Functionality description:** *(This product is developed with assistance of Boeing- pilots)*



GSA-070 or GSA-071

#### **Clock & Chronograph Functions:**

##### **CLOCK - UTC**

This displays UTC time of the Flight Simulator you use in your environment (*Prepar3D®, Microsoft® Flight Simulator FSX / FS9 or XPlane*).

##### **CLOCK - MAN**

This displays Manual adjusted time.

##### **DATE - UTC**

This displays UTC date of the Flight Simulator you use in your environment (*Prepar3D®, Microsoft® Flight Simulator FSX / FS9 or XPlane*).

Shows Day of the month and Month with auto-switch to Year, and back.

##### **DATE - MAN**

This displays Manual adjusted date.

Shows Day of the month and Month with auto-switch to Year, and back.

##### **CHR (Chronograph)**

This is the build-in Chronograph, CHR button controlled.

1. First press (CHR) starts the Chronograph, displays seconds with second hand and minutes in digital readout.
2. Second press (CHR) stops the Chronograph
3. Third press (CHR) resets the Chronograph.

##### **ET (Elapsed Time)**

This shows the elapsed time in minutes and hours in digital readout.

1. First press starts the ET counter (shows RUN)
2. Second press stops the ET counter (shows HLD)
3. Another press on ET button continuous the counter, toggles between RUN and HLD.
4. Pressing the RESET button stops and resets the counter. (At least press and hold for 1 sec!)
5. The ET minutes and hours are only displayed when the Chronograph is not running BUT the Elapsed Time still runs in background when RUN mode is active.

The Chrono / Elapsed display is blanked when neither the Chrono nor The Elapsed timer is running. Also the Chrono / Elapsed display is always overridden by Chrono when running.



**FLIGHT  
ILLUSION**

*more than simulation*